

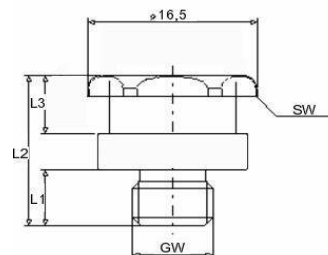
■ UMETA Button-Head Grease Nipples

Type T1



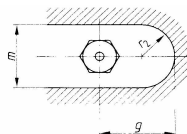
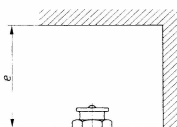
- hexagonal head form, wrench size 15 mm
- round collar, Ø 14,5 mm
- straight version A / 180°
- standard versions according to DIN are made of steel, zinc-plated and passivated, with cylindrical thread
- for further types and materials, please see table, or upon request

SW wrench size
L1 thread length
L2 total length
L3 neck length
GW thread
(all measures in mm)



Instructions for installation: necessary space

- e = 55 mm/2-11/64"
- m = 32 mm/1-17/64"
- r = 16mm/41/64"
- g = 35 mm/1-25/64"



SW 15			Ref.- No.:				
L1	L2	L3	thread	steel	brass	V2A	V4A
6	16	6,2	M6 x 1,0	4501504			
			1/4"-28 UNF, NF, SAE	4501537			
			M8 x 1,0	4501507			
			M8 x 1,25	4501508			
			M10 x 1,0	4501509			
			M10 x 1,5	4501511			
			G 1/8, 1/8 - 28 BSPP	4501561	4611560		
			G 1/4, 1/4 - 19 BSPP	4501562			

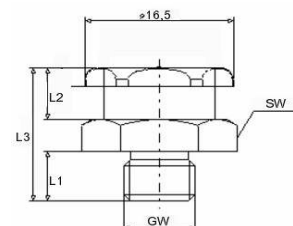
Type T1B



Button Head Grease Nipples

- hexagonal head and collar, wrench size 15 mm
- straight version A / 180°
- standard versions according to DIN are made of steel, zinc-plated and passivated, with cylindrical thread
- for further types and materials, please see table, or upon request

SW wrench size
L1 thread length
L2 neck length
L3 total length
GW thread
(all measures in mm)



Type T1B

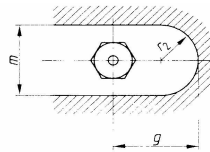
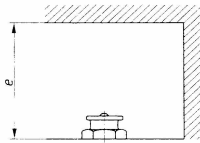
Instructions for installation: necessary space

e = 55 mm/2-11/64"

m = 32 mm/1-17/64"

r = 16mm/41/64"

g = 35 mm/1-25/64"



SW 15				Ref.- No.:			
L1	L3	L2	thread	steel	brass	V2A	V4A
6	6	16	M6 x 1,0	4601504	4611504		
			1/4"-28 UNF, NF, SAE	4601537			
			M8 x 1,0	4601507	4611507		
			M8 x 1,25	4601508	4511508		
			M10 x 1,0	4601509	4611509	4621509	
			M10 x 1,5	4601511	4611511		
			G 1/8, 1/8 - 28 BSPP	4601561	4611561	4621561	
			3/8"-24 UNF, NF, SAE	4601539			
			G 1/4, 1/4 - 19 BSPP	4601562	4611562	4621562	
			M12 x 1,5	4601514	4611514	4621514	
			M12 x 1,75	4601516			
			G 3/8	5372717			