

■ UMETA Button-Head Grease Nipples

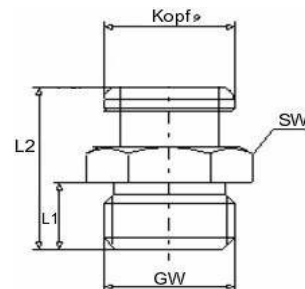


Type M1



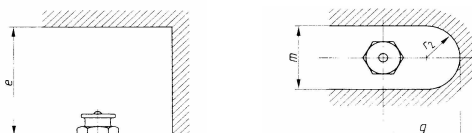
- head Ø 16 mm
- according to DIN 3404
- straight version A / 180°
- standard versions according to DIN are made of steel, zinc-plated and passivated, with cylindrical thread
- for further types and materials, please see table, or upon request

SW wrench size
L1 thread length
L2 total length
GW thread
(all measures in mm)



Instructions for installation: necessary space

e = 55 mm/2-11/64"
m = 32 mm/1-17/64"
r = 16mm/41/64"
g = 35 mm/1-25/64"



SW 17		Ref.- No.:					
L1	L2	thread	steel	brass	V2A	V4A	
6	17	M6 x 1,0	4101704	4111704	4121704	4141704	
		M8 x 1,0	4101707	4111707	4121707	4141707	
		M8 x 1,25	4101708	4111708	4121708		
		M10 x 1,0	4101709	4111709	4121709	4141709	
		M10 x 1,5	4101711	4111711	4121711		
		G 1/8, 1/8 - 28 BSPP	4101761	4111761	4121761	4141761	
		M12 x 1,5	4101714	4111714	4121714		
		M12 x 1,75	4101715		4121715		
		M14 x 1,5	4101717				
		G 1/4, 1/4 - 19 BSPP	4101762	4111762	4121762	4141762	
7	18	G 3/8, 3/8 - 19 BSPP	4101763	4111762	4121763	4141763	
		M16 x 1,5	4101719	4111715			