

## ■ UMETA Hydraulic-Type Grease Nipples - Drive-in Version



### APPLICATION AREA

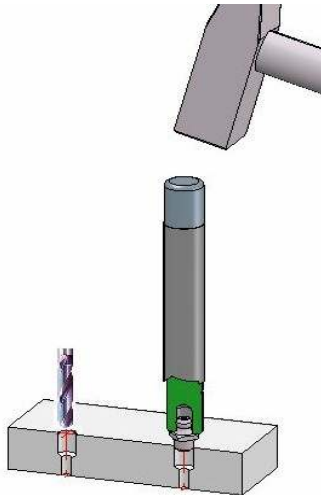
By using UMETA grease nipples with drive-in shank, you effectively save the thread-cutting process in the borehole.

### VERSIONS

Drive-in nipples as standard version are with plain shank, made of steel, case-hardened, zinc-plated and passivated.

Upon request, UMETA manufactures drive-in grease nipples in other versions, with respect to the following:

- dimension
- material
- shank length
- shank type (e. g. serrated ridge)
- shank  $\varnothing$
- surface colour
- further surface treatment



Drive-in tool

### MOUNTING INSTRUCTIONS

For straight-type grease nipples, we recommend using the drive-in tool, with which the nipple can be driven-in effectively and with care. The exact size of the core hole depends on the material and must be determined by mounting tests. The consistency of the receiving material is decisive.

The standard gauge for the installation bore diameter corresponds to the nominal width of the shank  $\varnothing$ .

### OPERATING INSTRUCTIONS

Since this type of grease nipple is only driven in, it may get loose by

- strong vibrations
- high back-pressure when greasing with automatic guns
- pulling off the hydraulic coupler

Drive-in type hydraulic grease nipples should only be lubricated by a hydraulic nozzle.



### RECOMMENDATION

Drive-in type grease nipples are only suitable for low pressures. Please check whether they can be replaced by self-forming nipples for a better fit.

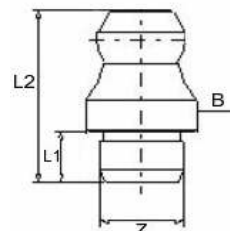
## Type H1a



### Hydraulic Drive-in Type Grease Nipples

- according to DIN 71412
- straight version A / 180°
- drive-in-type with plain shank
- standard versions according to DIN are made of steel, case-hardened, zinc-plated and passivated

B collar Ø  
L1 shank length  
L2 total length  
Z shank Ø  
(all measures in mm)



<b>B 8</b>				Ref.- No.:			
L1	L2	shank Ø	steel	brass	V2A	V4A	
4	14	6 mm	5241040		5241097		
5,5	15	5 mm	1100185				
		<b>6 mm</b>	<b>1100186</b>	<b>1110186</b>	<b>1120186</b>	<b>1140186</b>	
		6,35 mm, 1/4"	1100187				

<b>B 10</b>				Ref.- No.:			
L1	L2	shank Ø	steel	brass	V2A	V4A	
5,5	15	5/16"	1100290				
		<b>8 mm</b>	<b>1100288</b>	<b>1110288</b>	<b>1120288</b>		
11	21	6 mm	5241029				

<b>B 12</b>				Ref.- No.:			
L1	L2	shank Ø	steel	brass	V2A	V4A	
5,5	15	10 mm	1100389				

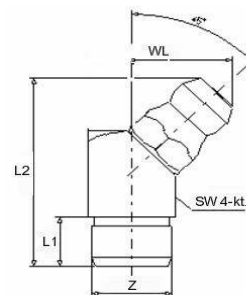
## Type H2a



### Hydraulic Drive-in Type Grease Nipples

- according to DIN 71412
- angled version B / 45°
- drive-in-type with plain shank
- standard versions according to DIN are made of steel, zinc-plated and passivated, head case-hardened

SW wrench size  
L1 shank length  
L2 total length  
WL angle length  
Z shank Ø  
(all measures in mm)



## Type H2a

SW 9 /square		Ref.- No.:						
L1	L2	WL	angle	shank Ø	steel	brass	V2A	V4A
5,5	20,5	10,5	45°	6 mm	1204586			
				8 mm	1204588			

SW 11 /square		Ref.- No.:						
L1	L2	WL	angle	shank Ø	steel	brass	V2A	V4A
5,5	20,5	10,7	45°	10 mm	1204789			

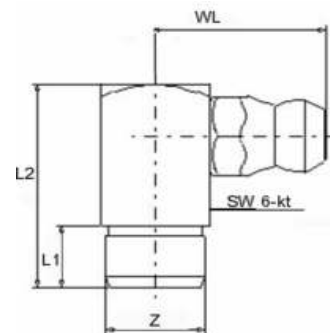
## Type H3 a



### Hydraulic Drive-in Type Grease Nipples

- according to DIN 71412
- angled version C / 90°
- drive-in-type with plain shank
- standard versions according to DIN are made of steel, zinc-plated and passivated, head case-hardened

SW            wrench size  
L1            shank length  
L2            total length  
WL           angle length  
Z             shank Ø  
(all measures in mm)



SW 9 /square		Ref.- No.:						
L1	L2	WL	angle	shank Ø	steel	brass	V2A	V4A
5,5	18	14	90°	6 mm	1304586			
				8 mm	1304588			

SW 11 /square		Ref.- No.:						
L1	L2	WL	angle	shank Ø	steel	brass	V2A	V4A
5,5	18	15	90°	10 mm	1304789			