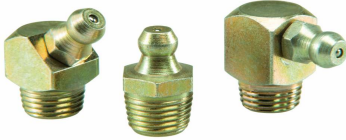


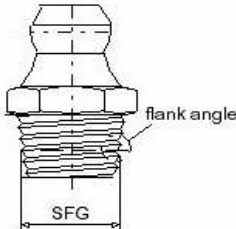


UMETA Hydraulic Grease Nipples with Self-Forming Thread



APPLICATION AREA

By using UMETA grease nipples with self-forming thread (SFT / SFG) you effectively save the thread-cutting process in the borehole.



VERSIONS

For safety reasons and in order to avoid abrasion wear, the standard for grease nipples with self-forming thread demands a specific surface hardness of 650 HV minimum as well as a particularly wide flank angle of 105° at the thread. For a better visual distinction, UMETA self-forming grease nipples are yellow passivated. Upon request, they are also available in another surface colour, e. g. blue passivated = silver coloured.

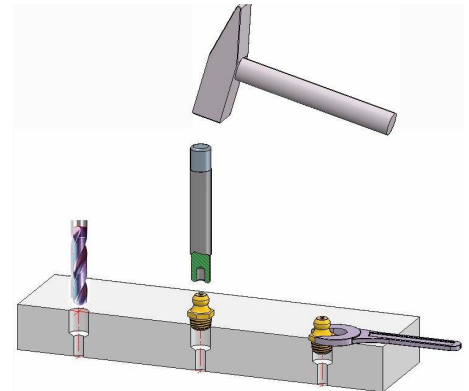
MOUNTING INSTRUCTIONS

The special thread angle and the specific hardness level allow these grease nipples to be driven and screwed into holes without prior thread cutting. Thus, the thread of the grease nipple forms its counterthread.

Later, the grease nipple can easily be screwed out and be replaced by a standard grease nipple.

The exact size of the core hole depends on the material and must be determined by mounting tests. The consistency of the receiving material is decisive.

The standard gauge for the installation bore diameter of 0.4-0.5 mm below nominal width have proved in daily use.



OPERATING INSTRUCTIONS

As suitable lubricating nozzle, we recommend our hydraulic couplers.



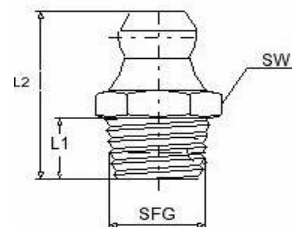
Type H1/S



Hydraulic-Type Grease Nipples with Self-Forming Thread

- according to DIN 71412
- straight version A / 180°
- with self-forming thread
- standard version made of steel, case-hardened according to DIN (650HV) and yellow passivated

SW wrench size
L1 thread length
L2 total length
SFG self-forming thread (SFT)
(all measures in mm)



SW 7					Ref.- No.:	
L1	L2			thread SFT	steel	not available in other materials
5,5	15			S 6 x 1	1100774	

SW 9					Ref.- No.:	
L1	L2			thread SFT	steel	not available in other materials
5,5	15			S 8 x 1	1100975	

SW 11					Ref.- No.:	
L1	L2			thread SFT	steel	not available in other materials
5,5	15			S 10 x 1	1101176	
8	18			S 10 x 1	5241014	

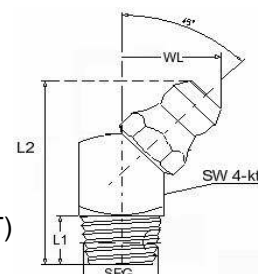
Type H2/S



Hydraulic-Type Grease Nipples with Self-Forming Thread

- according to DIN 71412
- angled version B / 45°
- with self-forming thread
- standard version made of steel, case-hardened according to DIN (head 550 HV / body 650 HV) and yellow passivated

SW wrench size
L1 thread length
L2 total length
WL angle length
SFG self-forming thread (SFT)
(all measures in mm)



SW9				/square	Ref.- No.:	
L1	L2	WL	angle	thread SFT	steel	not available in other materials
5,5	20,5	10,5	45°	S 6 x 1	1204574	
				S 8 x 1	1204575	

Type H2/S

SW11				/square	Ref.- No.:	
L1	L2	WL	angle	thread SFT	steel	not available in other materials
5,5	20,5	11	45°	S 10 x 1	1204776	

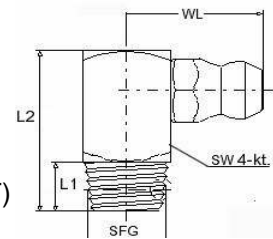
Type H3/S



Hydraulic-Type Grease Nipple with Self-Forming Thread

- according to DIN 71412
- angled version C / 90°
- with self-forming thread
- standard version made of steel, case-hardened according to DIN (head 550 HV / body 650 HV) and yellow passivated

SW wrench size
L1 thread length
L2 total length
WL angle length
SFG self-forming thread (SFT)
(all measures in mm)



SW9				/square	Ref.- No.:	
L1	L2	WL	angle	thread SFT	steel	not available in other materials
5,5	18	14	90°	S 6 x 1	1304574	
				S 8 x 1	1304575	

SW 11				/square	Ref.- No.:	
L1	L2	WL	angle	thread SFT	steel	not available in other materials
5,5	18	15	90°	S 10 x 1	1304776	