



UMETA Hydraulic-Type Grease Nipples - Special Designs



VERSIONS

The following are representing only commonly used special-type nipples. For individual applications, UMETA manufactures hydraulic-type grease nipples with special equipment in other versions, with respect to the following:

- dimension
- material
- thread size
- thread form (e. g. with tapered thread)
- different lengths

High-pressure hydraulic-type nipple with pin valve



- straight version A / 180°
- made of steel, zinc-plated and passivated
- with special pin valve

Due to the special pin valve, the lubrication point will be sealed hermetically after the greasing operation. As a result, internal impulse-like pressures up to 400 bar (5,800 PSI) can be attained, depending on the respective application.

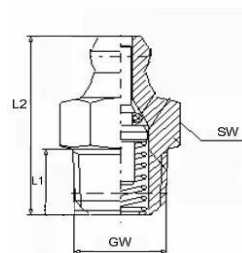
APPLICATION AREA

Heavy Industry, Heavy Vehicle Industrie

OPERATING INSTRUCTIONS

ATTENTION! During dismantling, utmost caution is required because of the possible pressure load. Dismantling should be done by experienced personnel only!

SW wrench size
L1 thread length
L2 total length
WL angle length
GW thread
(all measures in mm)



SW 11				Ref.- No.:				
L1	L2		thread	steel	brass	V2A	V4A	
7,5	21		R 1/8	5800054		5800051		
			1/8-27 NPT	5800048				
			M 10 x 1,0	5800049		5800050		
9	21		M 10 x 1,0	5800052				
			R 1/8	5800053				
			1/8" - 27 NPT			5800040		

SW 13				Ref.- No.:				
L1	L2		thread	steel	brass	V2A	V4A	
7	21		G 1/8, 1/8 BSPP	5800056				
			G 1/4, 1/4 BSPP			5800057		

Hydraulic-type nipple with sealing element

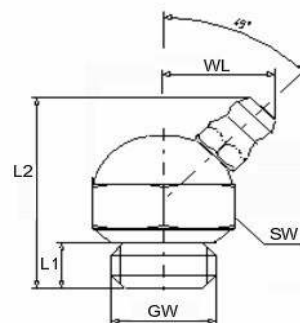


- angled version B / 45°
- made of steel, zinc-plated and passivated
- head standardly hardened according to DIN
- with cylindrical thread
- with sintered sealing element under the collar

APPLICATION AREA

Heavy Industry, Heavy Vehicle Industrie

SW wrench size
L1 thread length
L2 total length
WL angle length
GW thread
(all measures in mm)



SW 19					Ref.- No.:			
L1	L2	WL		thread	steel	brass	V2A	V4A
7	26,6	14		M14 x 2,0	5242042			

Hydraulic-type nipple with extension

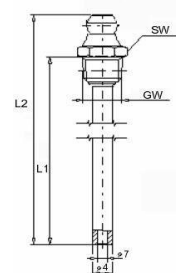


- straight version A / 180°
- made of steel, zinc-plated and passivated
- head standardly hardened according to DIN
- with press-fitted extension for exact grease flow

APPLICATION AREA

For deep seated lubrication points, which can be serviced sufficiently through the extension, e. g. for drive shafts.

SW wrench size
L1 thread length
L2 total length
GW thread
(all measures in mm)



SW 9					Ref.- No.:			
L1	L2	L3		thread	steel	brass	V2A	V4A
5,5	32	22		M8 x 1,25	5241213			
5,5	75	65		M8 x 1,0	5241130			
				5/16"-24 UNF/NF/SAE	5241131			
5,5	130	120		M8 x 1,0	5241133			

SW 11					Ref.- No.:			
L1	L2	L3		thread	steel	brass	V2A	V4A
5,5	59	49		M10 x 1,0	5241140			
5,5	75	65		M10 x 1,0	5241132			

Hydraulic-type nipple, double headed



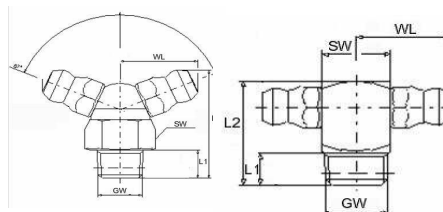
- made of steel, zinc-plated and passivated
- heads standardly hardened according to DIN
- optionally available as:
 - H2-double head with 67° angle / hexagon body
 - H3-double head with 90° angle / square body

APPLICATION AREA

Option of alternative greasing by means of two heads

SW
L1
L2
WL
GW
(all measures in mm)

wrench size
thread length
total length
angle length
thread



SW 11 /hex					Ref.- No.:				
L1	L2	WL	angle	thread	steel	brass	V2A	V4A	
5,5	20	13,5	67°	M8 x 1,0	5244159				
				M8 x 1,25	5244160				
				M10 x 1,0	5244161				
				R1/8, 1/8-28 BSP	5244162				

SW 9 /square					Ref.- No.:				
L1	L2	WL	angle	thread	steel	brass	V2A	V4A	
5,5	18	14,5	90°	M6 x 1,0	5244179				
				M8 x 1,0	5244178				

SW 11 /square		angle		Ref.- No.:				
L1	L2	WL	angle	thread	steel	brass	V2A	V4A
5,5	18	15	90°	M10 x 1,0	5244094			
				R1/8, 1/8-28 BSP	5244095			